



Connected
A CONNECTED NATION Initiative

Addressing Your Community's Unique Needs

Stonewall County, Texas
Technology Action Report

December 2025

**CONNECTED
NATION** 
connectednation.org



03	Overview
07	Infrastructure Results
10	Landscape Analysis
14	Recommendations



Overview



Today, technology plays a pivotal role in how businesses operate, how institutions provide services, and where consumers choose to live, work, and play. A community’s success now depends on how broadly and deeply it adopts technology resources, which include access to reliable, high-speed networks, the digital literacy of residents, and the use of online resources for local business, government, and leisure. Understanding a community’s connectivity needs is essential to developing a holistic plan that addresses connectivity gaps and builds upon community resources to support residents’ effective usage of online services.

As such, Connected Nation (CN) implemented the Connected Community Engagement Program to conduct a study designed to determine the availability of broadband infrastructure, how county residents are adopting and using broadband services, and what action steps would have the most significant impact toward improving broadband access, adoption, and usage across every local sector in Stonewall County.

Pursuant to this goal, between June and October 2025, CN conducted a comprehensive survey of broadband technology access and adoption across the community, collecting responses from local households. CN did not receive enough survey responses to conduct a quantitative analysis. Therefore, CN utilized publicly available data, broadband maps, and desktop research to conduct a landscape analysis and build a community connectivity profile.

This study approached broadband holistically – focusing on the quality of life available when residents and community leaders alike access, adopt, and use broadband in a productive and meaningful capacity. With this approach, the assessment identified issues and action opportunities necessary to close the local Digital Divide.

Data analyzed through this engagement played an integral role in developing a unique, locally informed action plan for Stonewall County. This document summarizes the assessment findings and

STONEWALL COUNTY, TEXAS QUICK FACTS	
Population	1,245
Households	476
Median Household Income	\$61,250
Poverty Rate	8.7%
Adults with a Bachelor’s Degree or Higher	14.1%
Hispanic or Latino	18.2%
Households with Broadband Access ¹	84.0%

Source: [Stonewall County U.S. Census Profile](#)

¹The current FCC definition of broadband is a minimum of 100 Mbps download and 20 Mbps upload. These data are derived from the [FCC National Broadband Map](#) – with numbers as of December 2025.



outlines recommendations to improve broadband and technology access, adoption, and usage. In addition, CN created [an interactive map](#) to support these efforts.



*Only **53.8%** of households making less than \$20,000 a year have an internet subscription in Stonewall County, compared with **81.2%** of all households in the county.*

***84%** of households in Stonewall County have access to internet service at speeds needed to run many modern applications (100 Mbps downstream and 20 Mbps upstream). Statewide, **94.2%** of households have internet access at these speeds.*

***88.7%** of households in Stonewall County have a computer in the home – less than the statewide tally (**97.2%**).*



Infrastructure Results



According to Federal Communications Commission (FCC) broadband data updated in November 2025, 84% of Stonewall County households have access to wired or licensed fixed wireless broadband at speeds of at least 100/20 Mbps – the FCC’s current definition of broadband. Broadband service is available throughout Stonewall County.

Below is the list of internet service providers (ISPs) in Stonewall County. Please contact your ISP for the most up-to-date information on speeds, prices, and service areas.

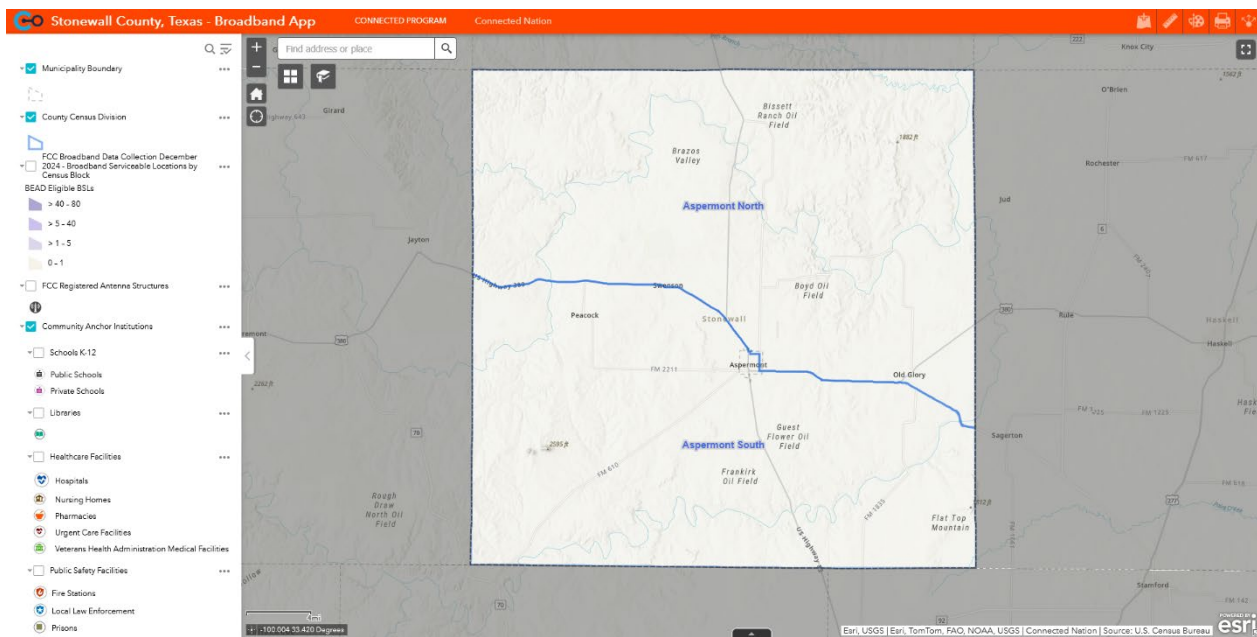
BROADBAND INFRASTRUCTURE QUICK FACTS	
Unserved Households (100/20 Mbps)	76
Households Served (25/3 Mbps)	90.54%
Households Served (100/20 Mbps)	83.99%
Households Served (1000/100 Mbps)	79.63%

PROVIDER	TECHNOLOGY	MAXIMUM DOWNLOAD SPEED (Mbps)	MAXIMUM UPLOAD SPEED (Mbps)
AMA Techtel Communications	Fixed Wireless	75	20
Cap Rock Telephone	Fiber	1000	250
Syntrio	Fiber	1000	1000
T-Mobile	Fixed Wireless	100	20
Valor Telecommunications	Copper	200	52
Valor Telecommunications	Fiber	2000	2000



Below is Stonewall County's (100/20 Mbps) map. To interact with the whole map, go to <https://connectednation.org/Texas/Stonewall/interactivemap>. Portions of the county are served by ISPs offering slower advertised speeds, and those areas are not shown on this map.

The first step in understanding the status of broadband infrastructure, both in Stonewall County and statewide, is having accurate maps. To that end, CN works with ISPs to develop a variety of broadband maps at the state and county levels. Data shown on this map are derived from a combination of direct ISP outreach and data collection, FCC Broadband Data Collection (BDC) filings, and independent research conducted by CN. If an ISP was unable or unwilling to supply granular data and a detailed service area could not be developed, the ISP's service is represented by BDC filings data alone.





Landscape Analysis



Internet access impacts all parts of a community, and expanding access and use of broadband can positively impact the economic, educational, and health outcomes for counties. Examining key sectors and their relationship to internet access is critical for understanding local challenges and opportunities.

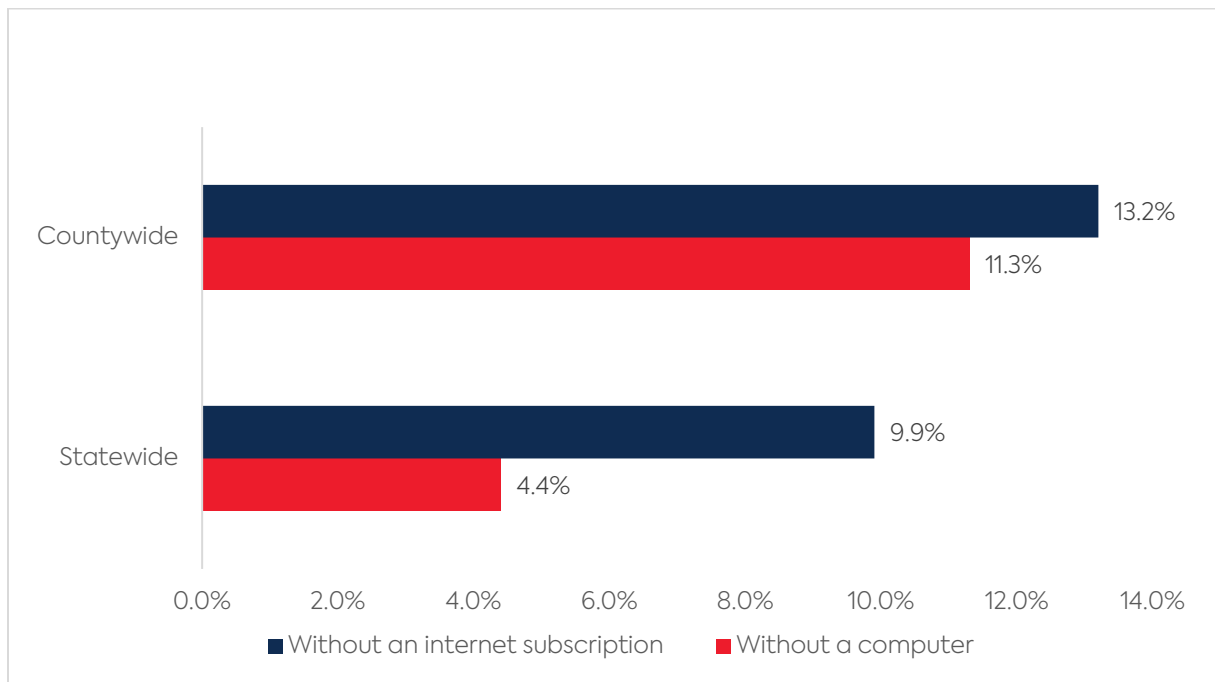
CN conducted a landscape analysis, analyzing publicly available data from the American Communities Study about technology and researching key institutions and sectors within Stonewall County. Connectivity affects every sector within a community, and a holistic understanding of the county helps inform the recommendations of this Technology Action Plan.

Internet Usage in Stonewall County

CN analyzed connectivity data from the U.S. Census Bureau’s American Community Survey¹ to better understand the Digital Divide in the county.

In Stonewall County, 13.2% of households do not have an internet subscription, compared with 9.9% of households statewide. In terms of device access, 11.3% of households do not have a computer, compared with 4.4% of households statewide.

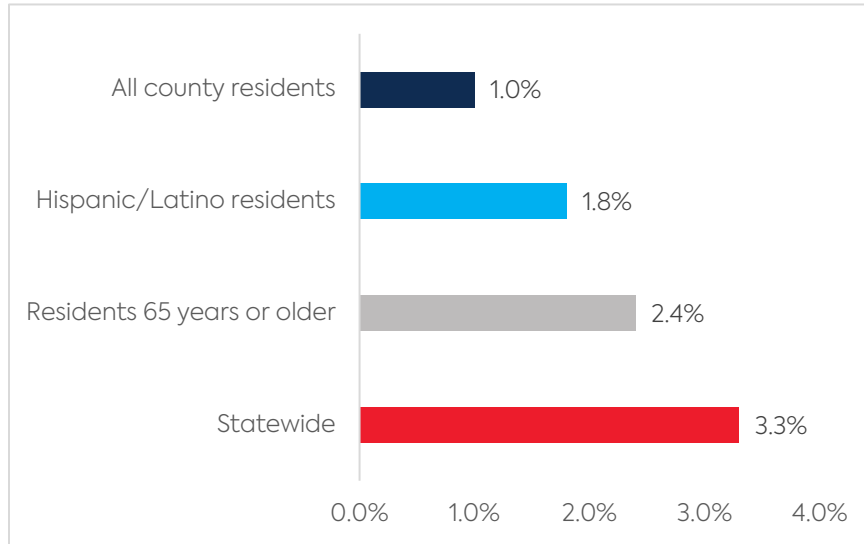
Table 1: Household Internet Subscription and Device Ownership Rates



Among households in Stonewall County, 1% have a computer but no internet subscription, which is less than the statewide average of 3.3%. The percentage is slightly higher for adults over the age of 65, but still lower than the state average, as shown in the chart below.

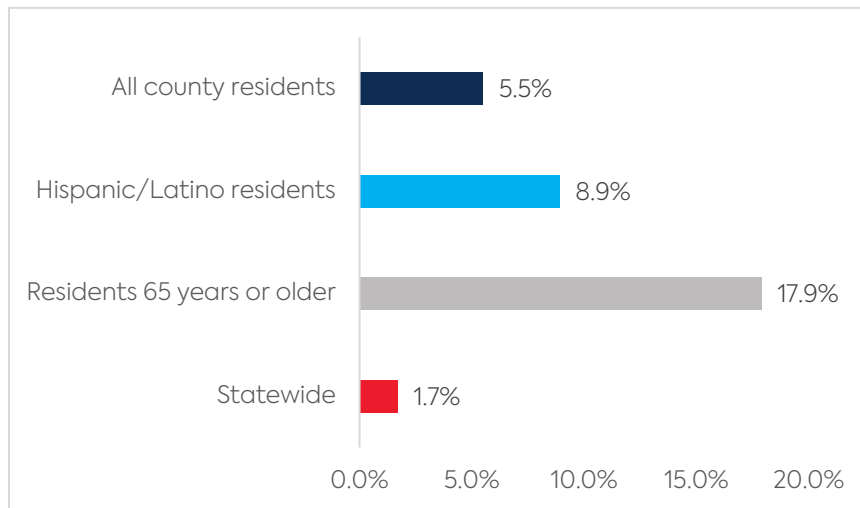
Table 2: Population with a Computer but No Internet Subscription

¹ U.S. Census Bureau. 2024. American Community Survey 2019–2023 five-year estimates. <https://data.census.gov/table/ACSST5Y2023.S2801?q=s2801+in+Stonewall+county+ok&moe=false>



Approximately 5.5% of county residents have no computer or internet subscription in the household, which is higher than the statewide average of 1.7%. This number is significantly higher for seniors, as shown in the chart below.

Table 3: Population with No Computer and No Internet Subscription

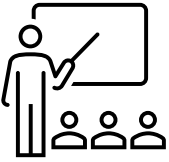

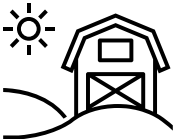



At the household level, 88.7% of households have a computer. Just over 1 out of 8 (13.2%) households do not have an internet subscription, with that figure rising to 46.2% among households earning less than \$20,000 a year.

The Affordable Connectivity Program, which ran from 2021-2024, provided a subsidy to households meeting specific criteria. Relatively few households (5.3%) were enrolled in the program in Stonewall County.



Key Sectors and Institutions

<p>Education</p> 	<p>Stonewall County is served by one school district – the Aspermont School District, serving 192 students.²</p> <p>In the community, 14.1% of residents have a bachelor’s degree or higher. The county does not have a higher education institution.</p>
<p>Health</p> 	<p>The county has one hospital – Stonewall Memorial Hospital, in Aspermont. The county ranks below average with respect to population health compared to other counties in Texas but ranks higher than the state average for community conditions.³</p>
<p>Agriculture</p> 	<p>Stonewall County has 344 farms, spanning 476,804 acres. 98% of these farms are family farms. Top crops in terms of acres are cotton and cottonseed, grains, oilseeds, dry beans, and dry peas. 63% of farms have internet access.⁴</p>
<p>Community Anchor Institutions</p> 	<p>The Stonewall County Library in Aspermont serves the community. The library offers the use of research databases to search for articles and information.</p>

² 2023 School Profiles, Office of Educational Quality and Accountability.

³ <https://www.countyhealthrankings.org/health-data/texas/stonewall?year=2025>

⁴ 2022 U.S. Census of Agriculture County Profile.



Recommendations



Stonewall County is well positioned to strengthen connectivity through practical, community-informed approaches that align with local values and build on existing assets. Given that reliable internet access and effective use of digital tools play an increasingly important role in everyday life, the county can work to leverage technology to support education, employment, healthcare access, and local commerce. Technology can enhance how residents live and work while helping the community remain connected and resilient.

The recommendations that follow present actionable strategies to expand broadband availability, strengthen digital skills, and ensure that technology investments result in meaningful outcomes for residents, businesses, and community anchor institutions. These recommendations are grounded in Connected Nation's community assessment and data analysis, as summarized in the Executive Summary.

The recommendations are organized around four key themes to support increased connectivity:

- Ecosystem Development - Working Together to Improve Connectivity
- Digital Infrastructure - Building and Expanding Reliable Internet Connectivity
- Digital Empowerment - Helping People Use Technology with Confidence
- Sustainability - Making Progress Last

Each recommendation has a clear goal for the county, along with strategic actions to achieve that goal. Each recommendation also includes a list of resources to support plan implementation.



Ecosystem Development – Working Together to Improve Connectivity

Goal: Strengthen countywide tech-focused leadership to accelerate high-speed internet access and adoption.

Justification: Improving connectivity requires coordination among local government, schools, healthcare providers, businesses, and community organizations. Without clear leadership and communication, efforts can become fragmented, and opportunities may be missed. Establishing shared responsibility and collaboration helps ensure that technology investments reflect local needs, support how residents live and work, and deliver tangible community benefits.

As the focus on artificial intelligence (AI) and technology continues to expand, a coordinated, strategic technology plan will ensure Stonewall County is equipped to leverage funding and economic development opportunities that benefit county residents.

Strategic Actions:

1. Designate connectivity lead(s) or champions across sectors of local government and key community anchor institutions.

Stonewall County should designate one or more individuals to coordinate broadband and digital opportunity initiatives throughout the community. These leaders may work within county government or be drawn from trusted local organizations. The role focuses on coordination rather than creating a new position. Key responsibilities include:

- Serving as a point of contact for internet service providers and community partners
- Sharing information about broadband access and digital skills programs
- Coordinating efforts across county departments and community organizations
- Tracking progress on this Technology Action Plan
- Monitoring funding and partnership opportunities

2. Build and maintain a local connectivity coalition.

The county should build or strengthen a cross-sector coalition committed to improving broadband access and digital skills. This coalition can help identify community needs, align efforts, and support outreach.

Potential partners include:

- Education and workforce organizations
- Healthcare providers
- Local businesses and agricultural partners
- Libraries, nonprofits, and faith-based organizations



- Public safety and local government

The county should also maintain relationships with regional and state broadband partners, including the Texas Broadband Development Office and the regional Council of Governments, to stay informed about programs and funding opportunities.

The Texas Broadband Development Office (BDO) regularly engages with local governments to keep them apprised of broadband infrastructure, adoption programs, and grants. The BDO hosts a monthly roundtable for government and community organizations on the first Thursday of each month at 10 AM CT. Full details about the BDO and its programs are available at broadbandfortexas.com. Stonewall County should also strengthen its relationship with the West Central Texas Council of Governments, which can provide additional resources and guidance on broadband and digital opportunity programming.

3. Strengthen community outreach and information access to create an informed and engaged citizenry.

Stonewall County should make it easier for residents to find information about broadband access, digital skills training, and technology resources by using existing communication channels.

Information shared may include:

- Locations offering free public Wi-Fi
- Digital skills classes and training opportunities
- Public computer access or device lending programs

Other organizations and community anchor institutions in the area can also collaborate to share resources with the stakeholders they serve. Increasing the flow of information about broadband and related technologies will help the public understand the resources available to them. It will also allow residents to share feedback on the barriers to access they continue to face.

4. Analyze and strengthen the local government's digital tools and services

The county should audit its current website to understand and strengthen how information is shared online. This may include reviewing the county's current websites, social media pages, and online tools to assess how easily residents can find timely, accurate information. Gathering feedback from community members on how they access information—and where gaps exist—can help identify opportunities for improvement. By updating content, simplifying navigation, and ensuring information is accessible across devices and in languages appropriate for its residents, the county can use digital tools more effectively to connect residents with services, programs, and community updates.



Resources

- [Smart Cities Readiness Guide](#)
- [Next Century Cities Becoming Broadband Ready Toolkit](#)
- [Municipal Boards: Best Practices for Adoption Technology](#)
- [Digital.gov resources](#)



Digital Infrastructure – Building and Expanding Reliable Internet Connectivity

Goal: Advance county-wide access to reliable, high-quality internet by fostering strong partnerships, championing investment, and coordinating community efforts to support broadband expansion.

Justification: Having broadband access is essential for communities to fully participate in the opportunities available in our AI-driven future. As noted in the Executive Summary, over 20% of homes still lack access to a reliable, high-speed internet connection. By building strong partnerships, pursuing investments in local and regional infrastructure, and maintaining key relationships with industry and regional and state broadband entities, Stonewall County can continue to close infrastructure gaps in the community.

Strategic Actions:

1. [Build and maintain relationships with local internet service providers and other digital infrastructure entities that conduct or are interested in conducting business in the County.](#)

Stonewall County should maintain regular communication with internet service providers operating in or considering expansion in the county. Ongoing dialogue helps align provider plans with local needs and fosters collaboration.

Key activities include:

- Staying informed about planned expansions and construction timelines
- Sharing local priorities and areas of need
- Exploring public-private partnerships where appropriate
- Ensuring providers can easily access county information and points of contact

Creating a business-friendly environment with clear processes and responsive communication can help attract and support broadband investment.

2. [Monitor and pursue federal, state, and local funding opportunities to maximize investment in local broadband infrastructure projects.](#)

Stonewall County should actively monitor federal, state, and local funding programs that support broadband infrastructure and be prepared to act when opportunities arise. This includes staying informed about application deadlines, eligibility requirements, and program priorities, and coordinating with internet service providers, regional partners, and state agencies to strengthen applications and align projects with local needs. By taking a proactive, coordinated approach to funding, the county can maximize



available resources, support broadband expansion, and accelerate progress toward reliable internet access for all residents.

Several active broadband deployment initiatives are underway at the state and federal levels. While many have already awarded grants and are beginning to build networks, the county should monitor current and future funding opportunities. Current programs, such as the Broadband Equity, Access, and Deployment (BEAD) Program and the Bringing Online Opportunity to Texans (BOOT) Program are deploying networks in communities across the state. Stonewall County should explore effective ways to support ISPs that are considering buildouts in the community. This may involve collaborating with and assisting ISPs seeking federal and state funding.

Additional funding sources, such as the U.S. Economic Development Administration and the U.S. Department of Agriculture, offer opportunities to expand broadband. Funding guides are linked in the resource section. Capitalizing on this once-in-a-generation funding opportunity will help ensure that Stonewall County residents enjoy faster and more reliable broadband for years to come.

Resources

- [The Rural Digital Opportunity Fund \(RDOF\)](#)
- [The FCC High-Cost program: CAF A-CAM](#)
- [Coronavirus State and Local Fiscal Recovery Funds, Allocation by County](#)
- [ARPA SLFRE, Final Rule](#)
- [BroadbandUSA: Federal Funding Guide](#)
- [Guide to Federal Broadband Funding Opportunities in the U.S.](#)
- [Lifeline Program](#)

Digital Empowerment – Helping People Use Technology with Confidence

Goal: Increase the ability and confidence of Stonewall County residents, businesses, and institutions to safely engage in digital spaces in ways that meet their needs.

Justification: Access to the internet alone is not enough. Residents also need skills, devices, and support to use technology in ways that meet their needs. Strengthening digital skills helps people access education, healthcare, jobs, and services, while also supporting local businesses and community organizations.

Strategic Actions:

1. Partner with trusted organizations to offer digital skills training.



Stonewall County should collaborate with local and regional organizations and institutions to offer free digital literacy classes that boost confidence, participation, and engagement online across the county. Equipping residents with essential digital skills to safely navigate online platforms and applications is vital to ensuring everyone in the community benefits from investments in technology and digital infrastructure. As technology continues to evolve, introductory training on basic artificial intelligence (AI) tools—such as how AI can support job searches, learning, and everyday tasks—should also be included to help residents use emerging technologies responsibly and effectively.

Curriculum can be drawn from county-developed materials and trusted, publicly available resources. Classes may be hosted in familiar, accessible locations such as schools, libraries, churches, community centers, or other shared spaces, and promoted through local media and community networks. Building digital skills helps residents access education, healthcare, employment, and civic information, while also strengthening the county. A more digitally connected and informed population supports economic growth, improves service delivery, and enhances overall community resilience.

Workshop topics can include:

- Computer and internet basics
- How to teleconference
- Internet safety basics
- Mobile device basics
- Microsoft Office skills
- Intro to social media and website building
- Telehealth basics
- Platform or application-specific basics, including ones used by the county, school district, or local hospital/clinic
- AI basics

Connected Nation provides digital literacy training classes to Connected Communities free of charge. To learn more, reach out to us today!

2. [Explore device access programs and partnerships to expand household device access and access to public computing centers.](#)

Residents need access to devices to take advantage of increased internet connectivity and the opportunities available online. Data from the American Community Survey indicate that many residents, especially seniors, do not have a computer at home or subscribe to the internet. A high-quality device is essential for completing schoolwork, applying for a job, accessing a telehealth appointment, or upskilling for new economic opportunities. The county can explore ways to increase access to devices. This may include refurbishment programs, where donated devices are updated and redistributed.



For residents without a device in their household or access to a high-speed internet connection, public computing centers are a lifeline to connectivity. Local institutions, including schools and libraries, can make available computers for public use, allowing residents access to a device and an internet connection. Many organizations have explored acquiring devices and hotspots for residents to borrow for periods of time to access the internet in their homes.

3. Determine how to expand access to the internet and free Wi-Fi in public spaces and within community anchor institutions.

Survey data indicates that a high number of Stonewall County residents lack an internet subscription at home. The county and local community anchor institutions should catalogue and promote places where people can access the internet through public Wi-Fi or public computing stations. Places like the library, school district, government buildings, and local businesses all may have Wi-Fi available for residents to use. The county should also explore ways to expand this access in buildings and open spaces within the county.

Resources

- [Connected Nation Digital Literacy Workshops](#)
- [Digital Learn – Free courses to learn anything about computers](#)
- [Digital Literacy Curriculum for K-12](#)
- [Free Applied Digital Skills – Google for Education](#)
- [Live, Virtual Classes for Seniors](#)
- [AARP Joins Nonprofit to teach tech to older adults](#)
- [The complete guide to digital skills](#)
- [Grow with Google](#)
- [Cybersecurity courses](#)
- [NDIA Honor Roll of Low Cost Plans](#)
- [Cybersecurity & Infrastructure Security Agency - Cyber Resource Hub](#)
- [Connected Nation Cybersecurity Workshops](#)



Sustainability – Making Progress Last

Goal: Drive community advancement by cultivating opportunities created by broadband and emerging technologies.

Justification: Broadband access plays a critical role in community development, influencing outcomes in healthcare, education, workforce readiness, business growth, public safety, and economic development. Securing additional funding to support the recommendations in this plan will help accelerate digital adoption, strengthen local programs, and ensure that investments in connectivity yield long-term benefits for Stonewall County residents.

Strategic Action:

Pursue grants to advance local community development using broadband technologies (e.g., workforce development, telehealth, digital literacy, etc.).

Stonewall County should leverage the dedicated grant-writing resources available through the Connected Engagement program and coordinate with the connectivity lead and local partners to identify, pursue, and align funding opportunities across sectors. By taking a proactive, coordinated approach to grant pursuit, the county can maximize available resources, unlock new funding streams, and sustain progress toward closing the Digital Divide.

For example, local schools may consider opportunities through the U.S. Department of Education, libraries may consider grants through the Institute of Museum and Library Services, and the Chamber of Commerce may consider opportunities through the U.S. Economic Development Administration (EDA). For specifics and further information about the grant-writing funds, please contact Connected Nation.